

RADAR VECTORING AREA

ALDERNEY

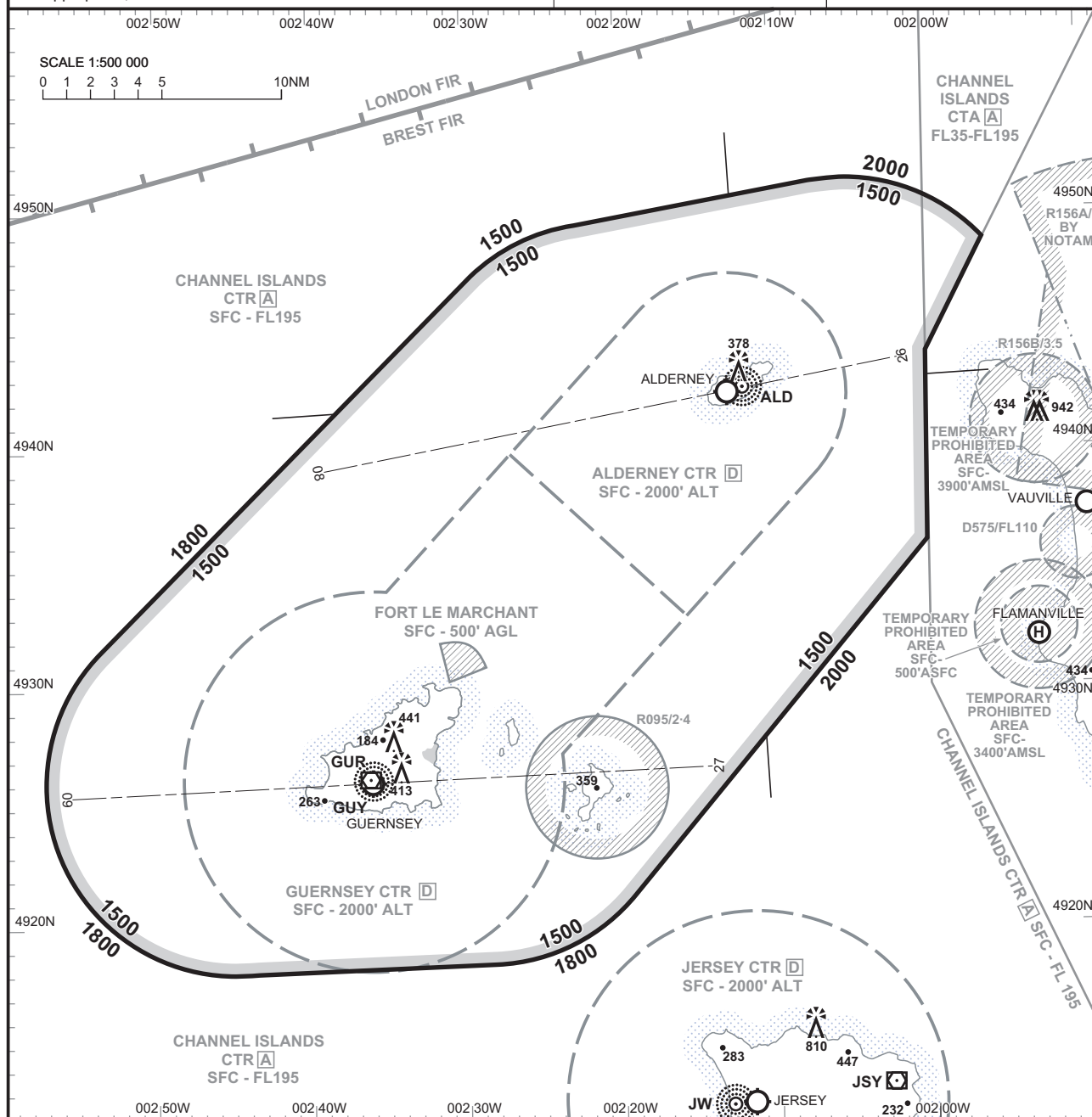
GENERAL INFORMATION

1. All bearings are magnetic.
2. Levels shown are based on QNH.
3. Only significant obstacles and dominant spot heights are shown.
4. The minimum levels shown within the Radar Vectoring Area ensure terrain clearance in conformity with Rule 29 of the Rules of the Air Regulations in respect of obstacles within the RVA.
5. Minimum Sector Altitudes are based on obstacles and spot heights within 25NM of the Aerodrome Reference Point.
6. Controlled airspace with a base in excess of 5000'ALT or FL55, as appropriate, is not shown.

Within the Radar Vectoring Area the minimum initial altitude to be allocated by the radar controller is 1500ft.

Elevation 290FT

Transition ALT 3000FT



LOSS OF COMMUNICATION PROCEDURES FOR AIRCRAFT INBOUND TO ALDERNEY

Initial Approach

Continue visually or by means of an appropriate final approach aid. If not possible proceed at 2000FT, or last assigned level if higher, to ALD NDB(L)†.

Intermediate and Final Approach

Continue visually or by means of an appropriate final approach aid. If not possible follow the Missed Approach Procedure to ALD NDB(L)†.

† In all cases where the aircraft returns to the holding facility the procedure to be adopted is the basic Radio Failure Procedure detailed at ENR 1.1.3.

CHANGE NEW CHART

AERO INFO DATE 30 MAR 05

ARRIVALS

ALDERNEY

GENERAL INFORMATION

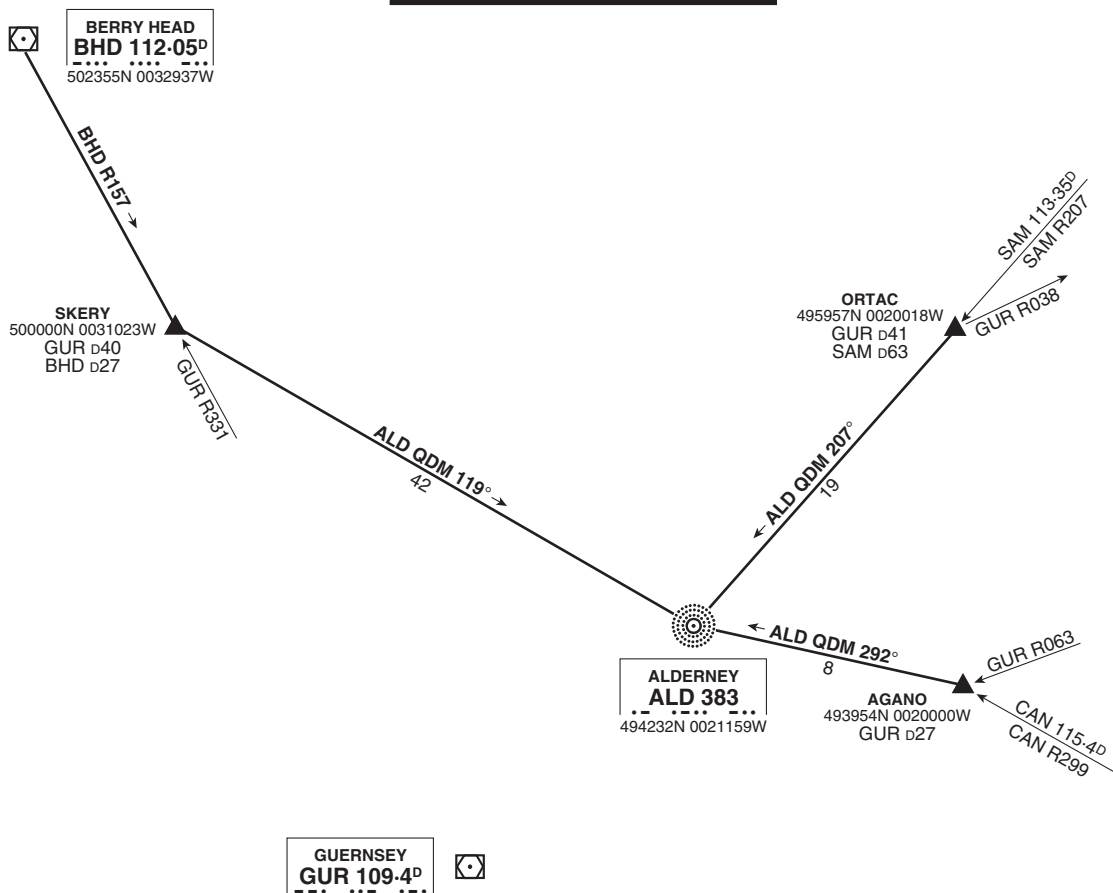
1 Callsign of Controlling Authority 'Jersey Zone'.

NOT TO SCALE

TRANSITION LEVEL - ATC

TRANSITION ALT 3000'

WARNING
For Minimum Descent Rate requirements
See ENR 1-1-3-1 para 2.



CHANGE RADIALS/TRACKS UPDATED.

AERO INFO DATE 29 JUL 02